

SCHEDULE 3

(s. 5, 1st par., subpar. 9)

ADDITIONAL CONDITIONS

On bridges

A- Must travel without sudden braking.

B- Must travel alone on a bridge.

C- Must travel alone and in the exact centre of a bridge with only one traffic lane in the direction travelled by the oversized vehicle.

D- Must travel alone by straddling both lanes in the direction travelled by the oversized vehicle or must travel alone on 2 lanes by straddling the 2 far right lanes on a bridge with more than 2 traffic lanes in the direction travelled by the oversized vehicle.

E- Must travel alone and in the exact centre of a bridge where a sign prohibits travel by oversized vehicles.

F- Must travel on a centre lane of a bridge where the highway has more than 2 traffic lanes in the same direction.

G- Maximum speed of 10 km/h on bridges.

H- Maximum speed of 25 km/h on bridges.

I- Maximum speed of 40 km/h on bridges.

J- Maximum speed of 25 km/h on a bridge where a sign prohibits travel by oversized vehicles.

K- Must install, at the rear of the oversized vehicle, a board or hard surface complying with Schedule 6 of this Regulation.

L- Must have, in accordance with Schedule 7 of this Regulation, in front of the oversized vehicle, an escort vehicle equipped with a “traffic control person ahead” sign complying with the standards of Tome V, as they read at the time they apply, in the manual entitled “Traffic Control Devices”, established and set out therein by the Minister of Transport pursuant to the second paragraph of section 289 of the Highway Safety Code (chapter C-24.2), with the necessary modifications, and a traffic control person where an interruption of traffic is required to enable the oversized vehicle to cross the bridge safely, alone and in the exact centre. That escort vehicle may be used in accordance with Schedule 8 of this Regulation, where the driver of the escort vehicle may warn the driver of the oversized vehicle that the latter may cross the bridge alone and in the centre without an interruption of traffic.

M- Must install, in accordance with Schedule 7 or 8 of this Regulation, at the rear of the oversized vehicle, a signal arrow light complying with the standards of Tome V, as they read at the time they apply, in the manual entitled “Traffic Control Devices”, established and set out therein by the Minister of Transport pursuant to the second paragraph of section 289 of the Highway Safety Code.

N- Must travel with a rear escort vehicle, equipped with a signal arrow light complying with the standards of Tome V, as they read at the time they apply, in the manual entitled “Traffic Control Devices”, established and set out therein by the Minister of Transport pursuant to the second paragraph of section 289 of the Highway Safety Code and used in accordance with Schedule 7 or 8 of this Regulation.

O- Must travel with 2 rear escort vehicles, each one with a signal arrow light complying with the standards of Tome V, as they read at the time they apply, in the manual entitled “Traffic Control Devices”, established and

set out therein by the Minister of Transport pursuant to the second paragraph of section 289 of the Highway Safety Code and used in accordance with Schedule 9 or 10 of this Regulation. On autoroutes with 2 or more traffic lanes in the direction travelled by the oversized vehicle, the latter must be escorted by a marked police emergency vehicle.

P- Must install, in accordance with Schedule 10 of this Regulation, at the rear of the oversized vehicle, a signal arrow light complying with the standards of Tome V, as they read at the time they apply, in the manual entitled “Traffic Control Devices”, established and set out therein by the Minister of Transport pursuant to the second paragraph of section 289 of the Highway Safety Code.

Q- Must travel with a rear escort vehicle, equipped with a signal arrow light complying with the standards of Tome V, as they read at the time they apply, in the manual entitled “Traffic Control Devices”, established and set out therein by the Minister of Transport pursuant to the second paragraph of section 289 of the Highway Safety Code and used in accordance with Schedule 11 of this Regulation.

R- Travel prohibited on a bridge where a sign prohibits travel by oversized vehicles.

S- Must use steel pontoons on bridges specified in the permit, in the presence of a representative of the Ministère des Transports du Québec.

T- Travel authorized on all public highways.

U- Travel authorized on the network of autoroutes referred to in Schedule 4 of this Regulation.

General

1- Must be escorted by a marked police emergency vehicle.

2- Departure time must be determined in consultation with a member of the police force in a position of authority.

3- Night travel authorized.

4- Night travel only.

5- Travel authorized on Sundays and legal holidays.

6- Travel prohibited during a thaw, except where emergency measures are implemented following a disaster, a derailment or a spill of hazardous substances.

7- Must travel on the far right of the roadway.

8- Must travel with an additional front escort vehicle equipped with a signal arrow light complying with the standards of Tome V, as they read at the time they apply, in the manual entitled “Traffic Control Devices”, established and set out therein by the Minister of Transport pursuant to the second paragraph of section 289 of the Highway Safety Code and used in accordance with Schedule 12 of this Regulation.

9- Authorized departure time specified on the permit.

10- Time when travel is prohibited as specified on the permit.

11- Traffic must be interrupted before the oversized vehicle travels on the roads specified on the permit.

12- Must notify the person in charge of the road network or bridge specified on the permit at least 48 hours before the departure of the oversized vehicle.

13- Must move the load to the right side of the vehicle.

- 14- Must install an amber light complying with paragraph 1 of section 7 of this Regulation at the front end of the front overhang.
- 15- Must allow other vehicles to pass every 15 minutes or at the first place where they can do so safely.
- 16- When travelling, must keep a minimum distance of 30 km from another outsized vehicle whose registration number is mentioned on the permit.
- 17- Travel in convoy authorized for vehicles whose registration numbers are mentioned on the permit.
- 18- Use of a conventional trailer or semi-trailer authorized.
- 19- Must travel with an additional rear escort vehicle equipped with a signal arrow light complying with the standards of Tome V, as they read at the time they apply, in the manual entitled “Traffic Control Devices”, established and set out therein by the Minister of Transport pursuant to the second paragraph of section 289 of the Highway Safety Code and used in accordance with Schedule 12 of this Regulation.
- 20- Must designate a person responsible for the convoy.
- 21- Must travel with a spare tractor to be used in case of breakdown.
- 22- Must install an amber light complying with paragraph 1 of section 7 of this Regulation at the rear end of the rear overhang.
- 23- Must install, on both sides and in the middle of the load, lights complying with the third paragraph of paragraph 4 of section 7.

O.C. 1444-90, Sch. 3; O.C. 1605-93, s. 22.

SCHEDULE 4

NETWORK OF AUTOROUTES

Autoroute 5

From the junction of route 148 (boul. Maisonneuve), exit 1 (Gatineau) to the junction of chemin de la Rivière, exit 21 (Chelsea).

Autoroute 10

From the junction of route 112, exit 115 (Magog) to the junction of route 112 (Fleurimont).

Autoroute 13

From the junction of autoroute 20 (Lachine) to the junction of autoroute 640, exit 22 (Boisbriand).

Autoroute 15

From the junction of autoroute 640, exit 21 (Saint-Eustache) to the junction of route 117 (Sainte-Agathe-des-Monts).

Autoroute 19

From the junction of boulevard Henri-Bourassa (Montréal) to the junction of boulevard Dagenais (Laval).

Autoroute 20

(1) From the southern approaches to the Louis-H.-Lafontaine bridge-tunnel, exit 90 (Longueuil) to the junction of autoroute 30, exit 98 (Boucherville).

(2) From the junction of autoroute 55, exit 173 (Grantham) to the junction of boulevard Foucault, exit 181 (Saint-Charles-de-Drummond).

(3) From exit 436 (Sainte-Anne-de-la-Pocatière) to the junction of the airport hill, exit 496 (Notre-Dame-du-Portage).

Autoroute 25

From the southern approaches to the Louis-H.-Lafontaine bridge-tunnel, exit 90 (Longueuil) to the junction of autoroute 40, exit 4 (Anjou).

Autoroute 30

(1) From the junction of autoroute 10 (Brossard) to the junction of route 133, exit 186 (Sorel).

(2) From the junction of route 132 (west of Bécancour) to the junction of route 132 (west of rivière Gentilly).

Autoroute 40

From the junction of boulevard Saint-Pierre, exit 41 (Sainte-Anne-de-Bellevue) to the junction of route 138 (Beauport).

Autoroute 50

From the junction of rue Montcalm (Gatineau) to the junction of route 309 (Masson).

Autoroute 55

(1) From the junction of route 112, exit 33 (Omerville) to the junction of autoroute 20 (Grantham).

(2) From the junction of autoroute 30, exit 176 (Bécancour) to the junction of route 155 (Grand-Mère).

Autoroute 73

From the junction of route 276 (Saint-Joseph-de-Beauce) to the junction of route 175 (Stoneham).

Autoroute 440

(1) From the junction of autoroute 13 (Laval) to the junction of autoroute 19, exit 27 (Laval).

(2) From the junction of autoroute 40 (Sainte-Foy) to the junction of avenue Saint-Sacrement (Québec).

(3) From the junction of côte d'Abraham (Québec) to the junction of autoroute 40, exit 29 (Beauport).

Autoroute 540

From the interchange of the Pierre-Laporte Bridge (Sainte-Foy) to the junction of route 138 (Sainte-Foy).

Autoroute 573

From the junction of autoroute 40 (Québec) to the junction of route 369 (Saint-Gabriel-de-Valcartier).

Autoroute 640

From the junction of the 25^e Avenue, exit 14 (Saint-Eustache) to the junction of route 344, exit 53 (Charlemagne).

O.C. 1605-93, s. 23.

SCHEDULE 5

(s. 13)



Board or hard surface

Text:

Highway gothic, serie "D", 102 mm, reflectorized red

Border:

15 mm, reflectorized red

Coating:

White, in compliance with Grade 2 of BNQ Standard 6830-101

Board or hard surface

Text:

Highway gothic, serie "D", 102 mm, reflectorized red

Border:

15 mm, reflectorized red

Coating:

White, in compliance with Grade 2 of BNQ Standard 6830-101

O.C. 1605-93, s. 23.

SCHEDULE 6

(Sch. 3, condition K)



Board or hard surface

Text:

Highway gothic, "C" series, 127 mm, black

Border:

18 mm, black

Coating:

White, in compliance with Grade 2 of BNQ Standard 6830-101

Board or hard surface

Text:

Highway gothic, "C" series, 127 mm, black

Border:

18 mm, black

Coating:

White, in compliance with Grade 2 of BNQ Standard 6830-101

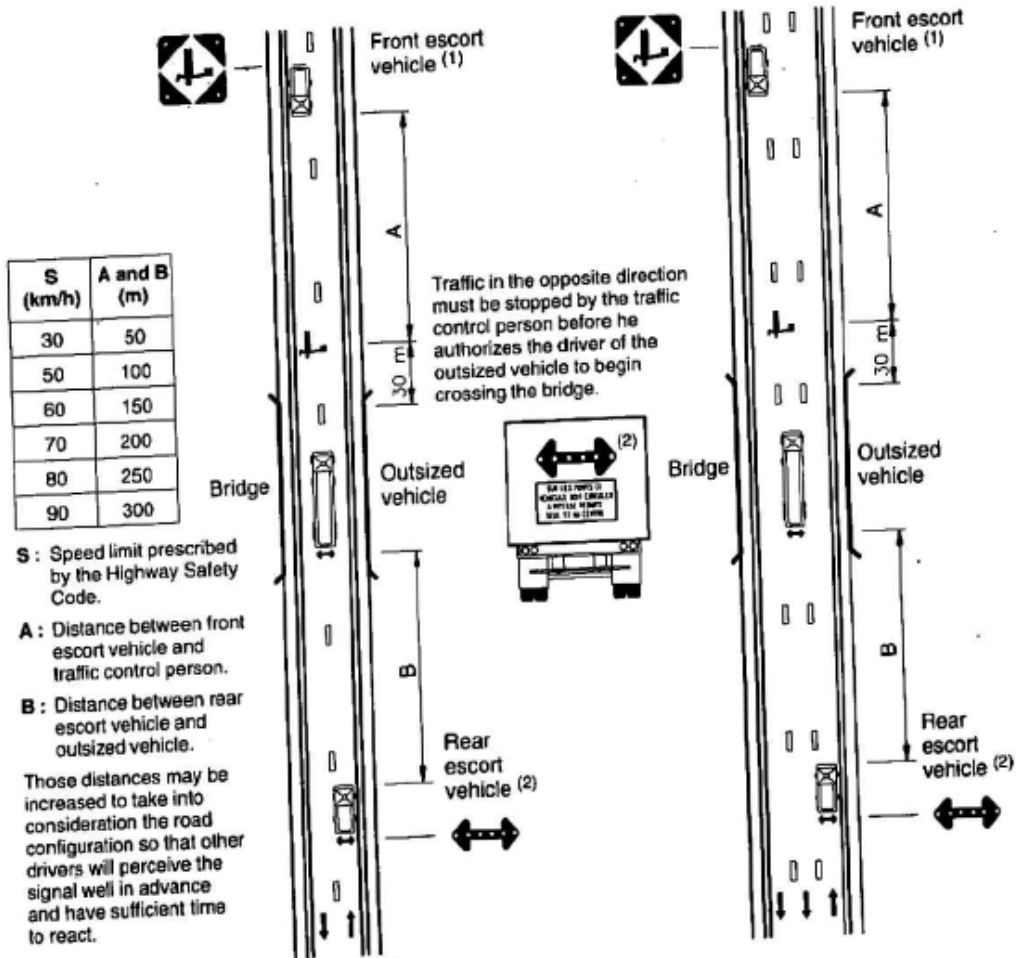
O.C. 1605-93, s. 23.

SCHEDULE 7

(Sch. 3, conditions K, L, M or N)

SIGNALLING FOR AN OUTSIZED VEHICLE ON A BRIDGE WITH ONLY ONE TRAFFIC LANE IN THE DIRECTION TRAVELLED BY THE VEHICLE WHERE AN INTERRUPTION OF TRAFFIC IS

REQUIRED TO ENABLE IT TO CROSS THE BRIDGE SLOWLY, ALONE AND IN THE EXACT CENTRE OF THE BRIDGE



(1) The “traffic control person ahead” sign must be used only to stop traffic. In such case, the flashing lights of that sign must be in operation. Otherwise, the sign must be turned down or hidden.

(2) If condition “N” appears on the permit, a rear escort vehicle is required and the arrow must be installed on that vehicle. If condition “M” appears on the permit, the arrow must be installed on the oversized vehicle.

The arrow must be flashing when the oversized vehicle is preparing to slow down at the approach to the bridge and while it is crossing the bridge; otherwise it must be turned off.

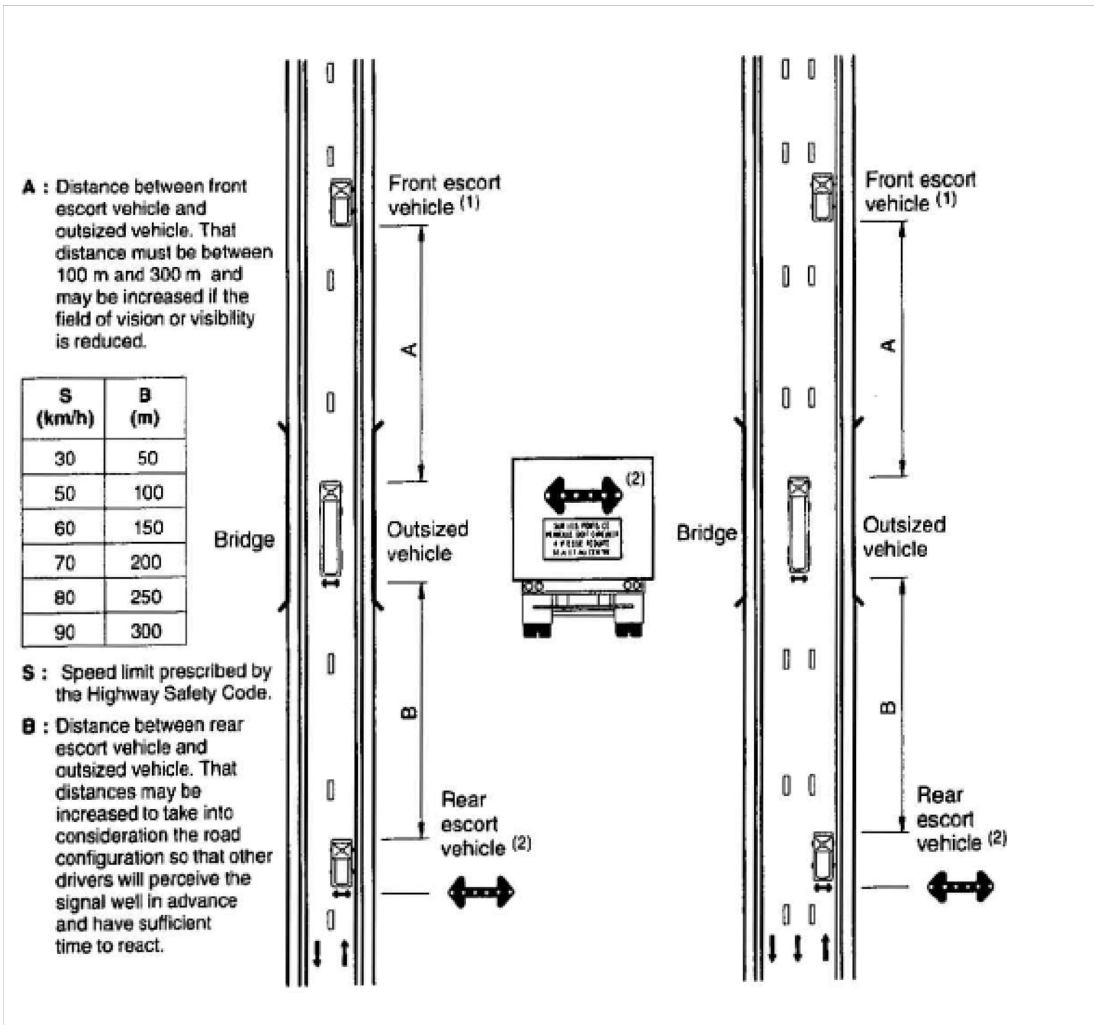
O.C. 1605-93, s. 23.

SCHEDULE 8

(Sch. 3, conditions K, L, M or N)

SIGNALLING FOR AN OUTSIZED VEHICLE ON A BRIDGE WITH ONLY ONE TRAFFIC LANE IN THE DIRECTION TRAVELLED BY THE VEHICLE WHERE AN INTERRUPTION OF TRAFFIC IS

NOT REQUIRED TO ENABLE IT TO CROSS THE BRIDGE SLOWLY, ALONE AND IN THE EXACT CENTRE OF THE BRIDGE



(1) The “traffic control person ahead” sign must be turned down or hidden.

(2) If condition “N” appears on the permit, a rear escort vehicle is required and the arrow must be installed on that vehicle. If condition “M” appears on the permit, the arrow must be installed on the oversized vehicle.

The arrow must be flashing when the oversized vehicle is preparing to slow down at the approach to the bridge and while it is crossing the bridge; otherwise it must be turned off.

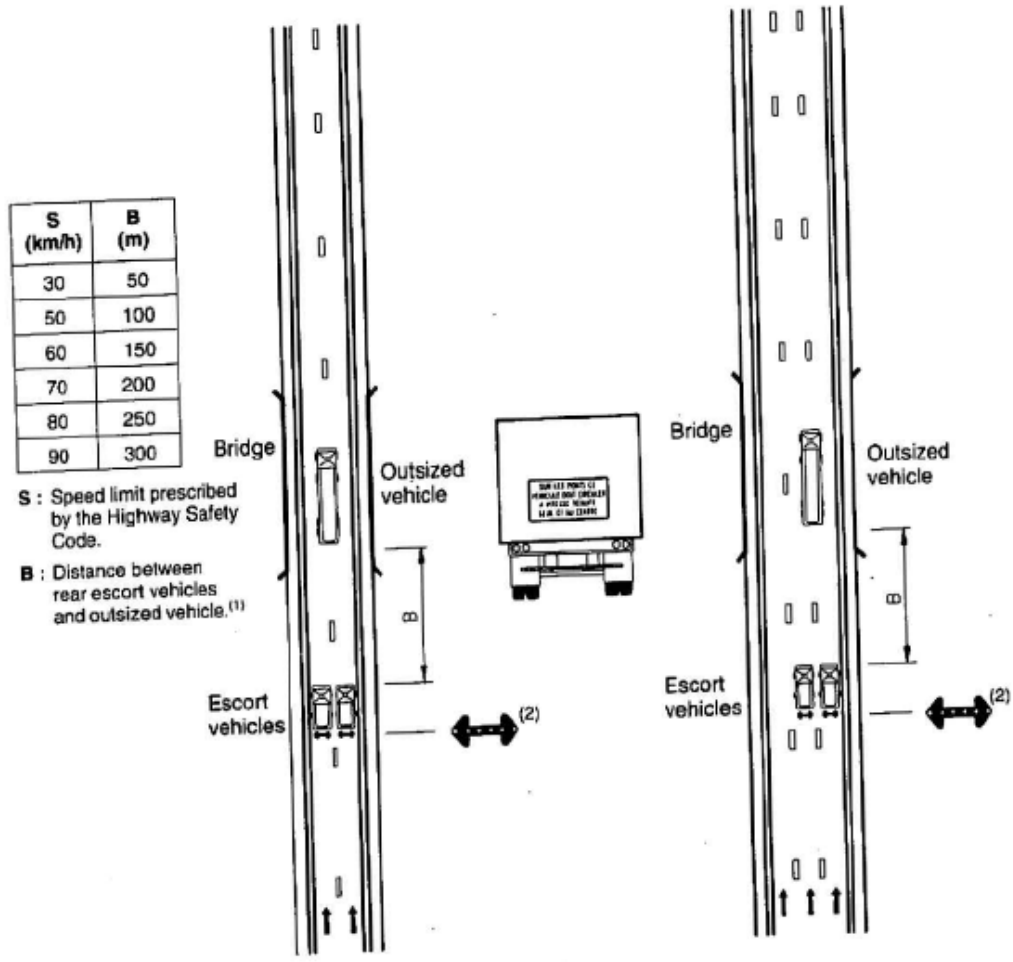
O.C. 1605-93, s. 23.

SCHEDULE 9

(Sch. 3, conditions K and O)

SIGNALLING FOR AN OUTSIZED VEHICLE ON A BRIDGE WITH 2 OR MORE TRAFFIC LANES IN THE DIRECTION TRAVELLED BY THE VEHICLE TO ENABLE IT TO CROSS THE BRIDGE

SLOWLY AND ALONE BY STRADDLING BOTH LANES OR, WHERE APPLICABLE, ALONE ON 2 LANES BY STRADDLING THE 2 FAR RIGHT LANES



(1) Where the oversized vehicle is preparing to slow down at the approach to a bridge, both escort vehicles must travel side by side at distance B from the oversized vehicle. They must then maintain the cruising speed they had before the approach to the bridge. On the bridge, that speed may be reduced, if necessary, until the oversized vehicle preceding them has crossed the bridge. Distance B may be increased to take into consideration the road configuration so that other drivers will perceive the signal well in advance and have sufficient time to react.

(2) Arrows must be flashing when the oversized vehicle is preparing to slow down at the approach to the bridge and while it is crossing the bridge; otherwise they must be turned off.

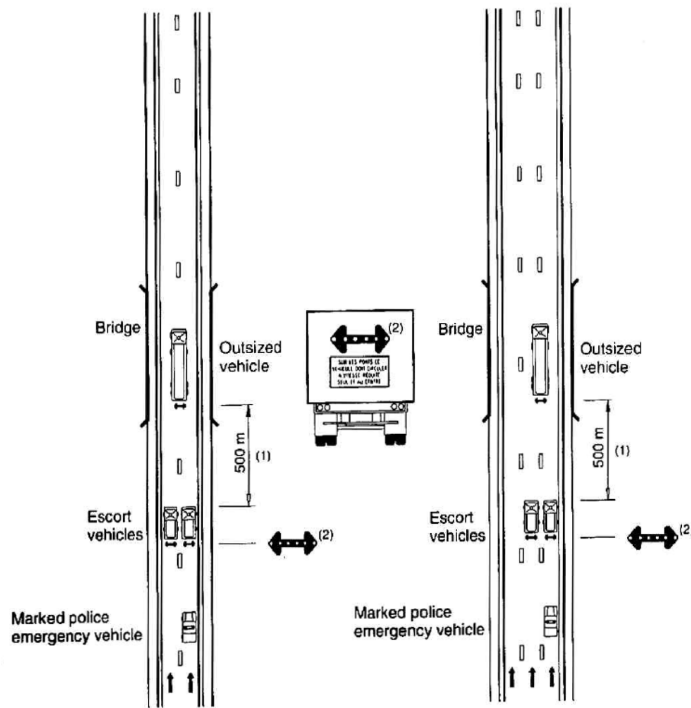
O.C. 1605-93, s. 23.

SCHEDULE 10

(Sch. 3, conditions K, O and P)

SIGNALLING FOR AN OUTSIZED VEHICLE ON A BRIDGE LOCATED ON AN AUTOROUTE WITH 2 OR MORE TRAFFIC LANES IN THE DIRECTION TRAVELLED BY THE VEHICLE TO ENABLE IT

TO CROSS THE BRIDGE SLOWLY AND ALONE BY STRADDLING BOTH LANES OR, WHERE APPLICABLE, ALONE ON 2 LANES BY STRADDLING THE 2 FAR RIGHT LANES



(1) Where the oversized vehicle is preparing to slow down at the approach to a bridge, both escort vehicles must travel side by side at distance of 500 m from the oversized vehicle. They must then maintain the cruising speed they had before the approach to the bridge. On the bridge, that speed may be reduced, if necessary, until the oversized vehicle preceding them has crossed the bridge.

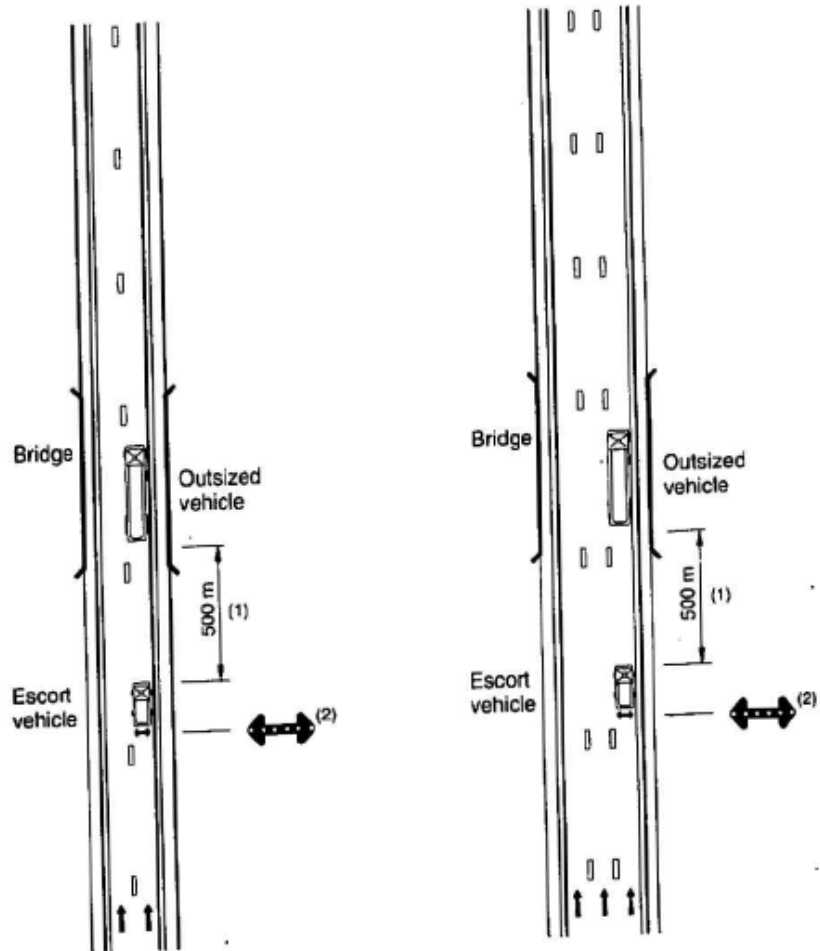
(2) Arrows must be flashing when the oversized vehicle is preparing to slow down at the approach to the bridge and while it is crossing the bridge; otherwise they must be turned off.

O.C. 1605-93, s. 23.

SCHEDULE 11

(Sch. 3, condition Q)

SIGNALLING FOR AN OUTSIZED VEHICLE ON A BRIDGE LOCATED ON AN AUTOROUTE WITH 2 OR MORE TRAFFIC LANES IN THE DIRECTION TRAVELLED BY THE VEHICLE TO ENABLE IT TO CROSS THE BRIDGE SLOWLY



(1) Where the oversized vehicle is preparing to slow down at the approach to a bridge, the escort vehicles must be 500 m from the oversized vehicle. It must then maintain the cruising speed it had before the approach to the bridge. On the bridge, that speed may be reduced, if necessary, until the oversized vehicle preceding them has crossed the bridge.

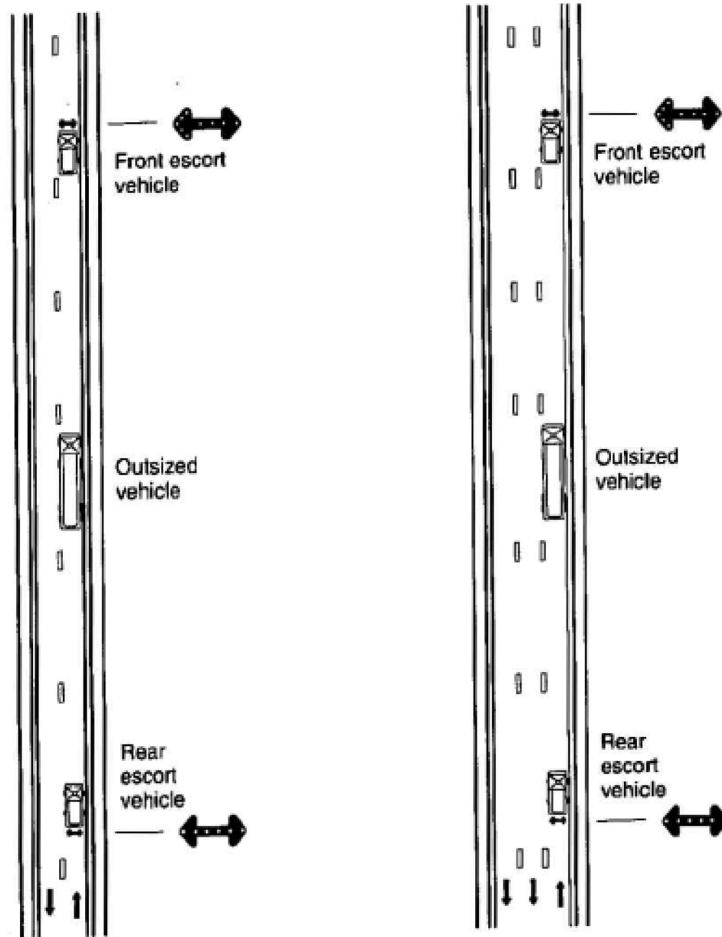
(2) The arrow must be flashing when the oversized vehicle is preparing to slow down at the approach to the bridge and while it is crossing the bridge; otherwise it must be turned off.

O.C. 1605-93, s. 23.

SCHEDULE 12

(Sch. 3, conditions 8 and 19)

METHOD FOR USING SIGNAL ARROW LIGHTS ON FRONT AND REAR ESCORT VEHICLES ON A ROAD WITH ONLY ONE TRAFFIC LANE IN THE DIRECTION TRAVELLED BY THE OUTSIZED VEHICLE



METHOD FOR USING SIGNAL ARROW LIGHTS ON A REAR ESCORT VEHICLES ON A ROAD WITH 2 OR MORE TRAFFIC LANES IN THE DIRECTION TRAVELLED BY THE OUTSIZED VEHICLE

